

BBCA Bank Central Asia Tbk.

COMPANY REPORT : JANUARY 2019

Main Board
 Industry Sector : Finance (8)
 Industry Sub Sector : Bank (81)

1 | 687.7T | 9.27% | 9.27%
 2 | 115.6T | 5.56% | 11.40%

As of 31 January 2019

Individual Index : 16,100,000
 Listed Shares : 24,408,459,120
 Market Capitalization : 687,708,335,706,000

COMPANY HISTORY

Established Date : 10-Aug-1955
 Listing Date : 31-May-2000 (IPO Price: 1,400)
 Underwriter IPO :
 Danareksa Sekuritas
 Bahana Securities
 Securities Administration Bureau :
 PT Raya Saham Registrasi

BOARD OF COMMISSIONERS

1. Djohan Emir Setijoso
 2. Cyrillus Harinowo *)
 3. Raden Pardede *)
 4. Sumantri Slamet *)
 5. Tonny Kusnadi
- *) Independent Commissioners

BOARD OF DIRECTORS

1. Jahja Setiaatmadja
2. Armand Wahyudi Hartono
3. Erwan Yuris Ang
4. Eugene Keith Galbraith
5. Henry Koenafi
6. Inawaty Handoyo
7. Lianawaty Suwono
8. Rudy Susanto
9. Santoso
10. Subur Tan
11. Suwignyo Budiman

AUDIT COMMITTEE

1. Cyrillus Harinowo
2. Ilham Ikhsan
3. Tjen Lestari

CORPORATE SECRETARY

Jan Hendra

HEAD OFFICE

BCA Tower 20th Floor, Grand Indonesia
 Jl. M.H. Thamrin No. 1
 Jakarta 10310
 Phone : (021) 2358-8000
 Fax : (021) 235-88300
 Homepage : www.bca.co.id
 Email : halobca@bca.co.id
 humas@bca.co.id
 investor_relations@bca.co.id

SHAREHOLDERS (December 2018)

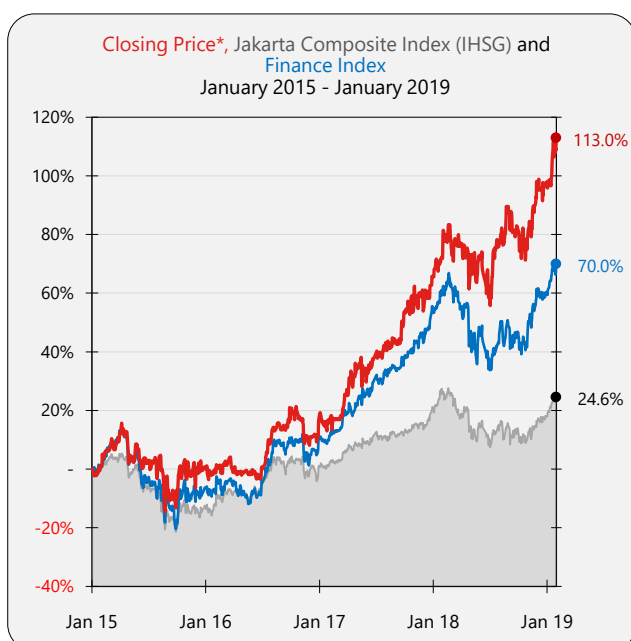
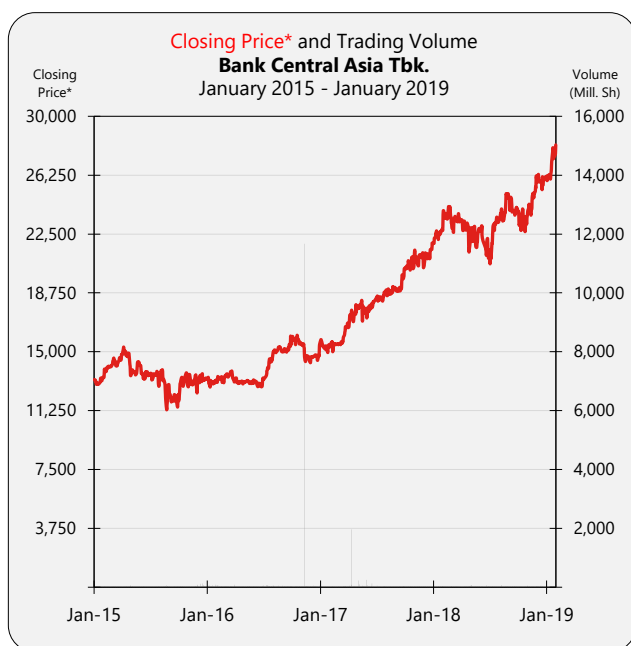
1. Dwimuria Investama Andalan 13,545,990,000 : 55.50%
2. Public (<5%) 10,862,469,120 : 44.50%

DIVIDEND ANNOUNCEMENT

Year	Bonus Shares	Cash Dividend	Cum Date	Ex Date	Recording Date	Payment Date	F/I
2001		85.00	14-Nov-01	15-Nov-01	20-Nov-01	4-Dec-01	I
2001		140.00	29-Oct-02	30-Oct-02	1-Nov-02	15-Nov-02	F
2002		225.00	3-Dec-03	4-Dec-03	8-Dec-03	19-Dec-03	F
2003		225.00	30-Jun-04	1-Jul-04	6-Jul-04	20-Jul-04	F
2004		50.00	22-Nov-04	23-Nov-04	25-Nov-04	8-Dec-04	F
2004		80.00	19-Jul-05	20-Jul-05	22-Jul-05	5-Aug-05	F
2005		50.00	6-Oct-05	7-Oct-05	11-Oct-05	25-Oct-05	I
2005		90.00	6-Jun-06	7-Jun-06	9-Jun-06	23-Jun-06	F
2006		55.00	10-Oct-06	11-Oct-06	13-Oct-06	3-Nov-06	I
2006		115.00	8-Jun-07	11-Jun-07	13-Jun-07	27-Jun-07	I
2007		55.00	29-Nov-07	30-Nov-07	4-Dec-07	18-Dec-07	I
2007		63.50	12-Jun-08	13-Jun-08	17-Jun-08	1-Jul-08	F
2008		35.00	15-Jan-09	16-Jan-09	20-Jan-09	30-Jan-09	I
2008		65.00	9-Jun-09	10-Jun-09	12-Jun-09	26-Jun-09	F
2009		40.00	12-Nov-09	13-Nov-09	17-Nov-09	2-Dec-09	I
2009		70.00	31-May-10	1-Jun-10	3-Jun-10	17-Jun-10	F
2010		42.50	19-Nov-10	22-Nov-10	24-Nov-10	9-Dec-10	I
2010		70.00	6-Jun-11	7-Jun-11	9-Jun-11	23-Jun-11	F
2011		43.50	6-Dec-11	7-Dec-11	9-Dec-11	23-Dec-11	I
2011		113.50	8-Jun-12	11-Jun-12	13-Jun-12	27-Jun-12	F
2012		43.50	3-Dec-12	4-Dec-12	6-Dec-12	20-Dec-12	I
2012		71.00	28-May-13	29-May-13	31-May-13	17-Jun-13	F
2013		45.00	28-Nov-13	29-Nov-13	3-Dec-13	17-Dec-13	I
2013		120.00	29-Apr-14	30-Apr-14	5-May-14	20-May-14	F
2014		50.00	4-Dec-14	5-Dec-14	9-Dec-14	23-Dec-14	I
2014		148.00	16-Apr-15	17-Apr-15	21-Apr-15	13-May-15	F
2015		55.00	12-Nov-15	13-Nov-15	17-Nov-15	9-Dec-15	I
2016		70.00	30-Nov-16	1-Dec-16	5-Dec-16	22-Dec-16	I
2017		80.00	28-Nov-17	29-Nov-17	4-Dec-17	20-Dec-17	I
2017		175.00	12-Apr-18	13-Apr-18	17-Apr-18	30-Apr-18	F
2018		85.00	30-Nov-18	3-Dec-18	4-Dec-18	21-Dec-18	I

ISSUED HISTORY

No.	Type of Listing	Shares	Listing Date	Trading Date
1.	First Issue	662,400,000	31-May-00	31-May-00
2.	Company Listing	2,252,146,140	T: 31-May-00	: 11-Jan-01
3.	Stock Split	21,199,350,480	T: 15-May-01	: 28-Jan-08
4.	Option Conversion	210,852,000	T: 29-Nov-01	: 9-Nov-06
5.	Option Conversion MSOP	89,226,500	T: 4-Aug-03	: 29-Sep-04
6.	Partial Delisting	-5,516,000	4-Jan-08	4-Jan-08



SHARES TRADED	2015	2016	2017	2018	Jan-19
Volume (Million Sh.)	4,568	17,791	7,238	4,836	442
Value (Billion Rp)	61,044	263,860	130,261	113,392	11,853
Frequency (Thou. X)	881	981	1,073	1,422	149
Days	244	246	238	240	22

Price (Rupiah)	2015	2016	2017	2018	Jan-19
High	15,600	16,200	22,750	26,975	28,200
Low	11,000	12,625	14,950	20,600	25,575
Close	13,300	15,500	21,900	26,000	28,175
Close*	13,300	15,500	21,900	26,000	28,175

PER (X)	18.02	18.95	23.16	25.72	27.87
PER Industry (X)	25.09	20.71	19.10	25.63	24.30
PBV (X)	3.66	3.49	4.11	4.46	4.79

* Adjusted price after corporate action

TRADING ACTIVITIES

Month	Closing Price			Freq. (X)	Volume (Thou. Sh.)	Value (Million Rp)	Day
	High	Low	Close				
Jan-15	13,425	12,800	13,375	53,863	273,651	3,592,271	21
Feb-15	14,550	13,250	14,100	62,002	260,770	3,622,454	19
Mar-15	14,825	14,025	14,825	90,945	331,831	4,777,845	22
Apr-15	15,600	12,900	13,475	86,286	451,166	6,531,175	21
May-15	14,500	13,400	14,125	67,586	339,175	4,710,311	19
Jun-15	14,125	13,050	13,500	78,844	312,229	4,220,125	21
Jul-15	13,900	12,650	13,100	59,176	246,896	3,285,014	19
Aug-15	13,900	11,000	12,900	86,829	484,481	6,064,524	20
Sep-15	12,850	11,300	12,275	62,916	340,220	4,094,909	21
Oct-15	13,775	11,875	12,900	76,510	379,238	4,966,315	21
Nov-15	13,750	12,375	12,375	70,680	466,909	6,129,554	21
Dec-15	13,800	12,700	13,300	85,393	681,684	9,049,648	19

Jan-16	13,550	12,750	13,100	84,389	565,286	7,404,232	20
Feb-16	13,575	12,875	13,475	111,412	533,233	7,075,078	20
Mar-16	13,925	13,050	13,300	87,449	561,182	7,541,426	21
Apr-16	13,450	12,775	13,050	75,089	374,867	4,906,411	21
May-16	13,300	12,875	13,000	69,705	402,089	5,250,016	20
Jun-16	13,450	12,625	13,325	75,748	422,148	5,505,430	22
Jul-16	14,675	13,200	14,450	77,416	628,474	8,850,322	16
Aug-16	15,500	14,375	15,050	77,154	634,101	9,559,456	22
Sep-16	16,000	14,800	15,700	91,853	535,155	8,173,240	21
Oct-16	16,200	15,350	15,525	74,088	399,505	6,289,722	21
Nov-16	15,650	13,950	14,300	83,694	12,183,909	185,159,678	22
Dec-16	15,550	14,125	15,500	72,759	551,439	8,145,086	20

Jan-17	15,875	14,950	15,300	60,466	265,560	4,090,291	21
Feb-17	15,700	15,000	15,450	49,112	291,641	4,526,374	19
Mar-17	17,000	15,350	16,550	69,915	505,739	8,118,270	22
Apr-17	18,000	16,575	17,750	70,124	2,459,800	42,831,784	17
May-17	18,550	16,800	17,150	134,338	1,008,009	17,752,214	20
Jun-17	18,325	17,325	18,150	84,529	461,064	8,209,641	15
Jul-17	19,000	18,075	18,700	105,834	401,795	7,420,533	21
Aug-17	19,200	18,500	18,950	95,958	301,120	5,677,576	22
Sep-17	20,375	18,675	20,300	84,559	396,706	7,679,084	19
Oct-17	21,375	20,050	20,900	108,732	388,988	7,981,308	22
Nov-17	21,625	20,350	20,350	120,899	433,958	9,101,570	22
Dec-17	22,750	20,650	21,900	88,224	323,853	6,872,305	18

Jan-18	23,450	21,325	22,725	100,058	429,302	9,641,870	22
Feb-18	24,700	22,850	23,175	106,682	357,012	8,445,760	19
Mar-18	23,800	22,525	23,300	107,419	420,658	9,764,952	21
Apr-18	23,650	21,050	22,100	105,958	347,898	7,862,787	21
May-18	23,050	21,475	22,700	147,836	531,671	11,883,859	20
Jun-18	23,150	20,825	21,475	97,746	296,903	6,493,567	13
Jul-18	23,625	20,600	23,275	114,510	351,425	7,878,376	22
Aug-18	25,475	23,025	24,800	117,944	445,397	10,714,112	21
Sep-18	25,200	23,600	24,150	117,922	344,664	8,322,923	19
Oct-18	24,200	22,175	23,650	135,869	369,953	8,673,404	23
Nov-18	26,200	23,350	26,050	146,618	512,284	12,622,290	21
Dec-18	26,975	24,900	26,000	123,413	429,003	11,088,346	18

Jan-19	28,200	25,575	28,175	148,684	442,357	11,853,360	22
--------	--------	--------	--------	---------	---------	------------	----

BALANCE SHEET	Dec-14	Dec-15	Dec-16	Dec-17	Sep-18
<i>(in Million Rp, except Par Value)</i>					
Cash on Hand	19,577,571	17,849,460	15,943,854	16,754,289	14,712,333
Placements with Other Banks	11,502,178	56,259,099	35,363,890	18,969,682	37,544,628
Marketable Securities	26,289,663	51,153,115	2,547,098	140,349,930	10,075,439
Loans	339,859,068	378,616,292	403,391,221	454,264,956	501,960,505
Investment	166,888	173,120	108,709,161	3,346,595	118,145,653
Fixed Assets	8,844,930	9,712,021	16,990,835	16,868,949	16,715,097
Other Assets	7,133,595	8,619,292	258,733	11,982,478	9,216,407
Total Assets	552,423,892	594,372,770	676,738,753	750,319,671	798,966,227
Growth (%)		7.59%	13.86%	10.87%	6.48%

Deposits	451,660,016	478,173,935	535,399,322	586,873,856	619,591,844
Taxes Payable	251,818	-	163,682	147,398	1,120,808
Fund Borrowings	3,080,942	1,743,337	2,788,552	3,040,602	1,526,072
Other Liabilities	6,260,219	-	9,258,788	11,332,381	251,091
Total Liabilities	472,550,777	501,945,424	560,556,687	614,940,262	650,760,746
Growth (%)		6.22%	11.68%	9.70%	5.83%

Authorized Capital	5,500,000	5,500,000	5,500,000	5,500,000	5,500,000
Paid up Capital	1,540,938	1,540,938	1,540,938	1,540,938	1,540,938
Paid up Capital (Shares)	24,655	24,655	24,655	24,655	24,655
Par Value	63	63	63	63	63
Retained Earnings	70,332,010	81,995,065	985,031,800	1,159,983,220	129,995,488
Total Equity	77,920,617	89,624,940	112,715,059	131,401,694	143,705,181
Growth (%)		15.02%	25.76%	16.58%	9.36%

INCOME STATEMENTS	Dec-14	Dec-15	Dec-16	Dec-17	Sep-18
Total Interest Income	43,771,256	47,081,728	50,425,826	53,767,939	50,248,321
Growth (%)		7.56%	7.10%	6.63%	

Interest Expenses	11,744,562	11,212,932	10,346,736	11,941,465	8,320,393
Other Operating Revenue	1,738,943	12,007,376	1,953,656	2,965,830	2,129,884
Other Operating Expenses	18,306,319	25,219,058	23,378,946	25,190,321	20,874,699
Income from Operations	20,504,773	22,657,114	25,839,200	29,158,743	23,311,875
Growth (%)		10.50%	14.04%	12.85%	

Non-Operating Revenues	236,348	-	-	-	-
Income Before Tax	20,741,121	22,657,114	25,839,200	29,158,743	23,311,875
Provision for Income Tax	4,229,451	4,621,346	5,206,919	5,837,593	4,801,937
Profit for the period	16,511,670	18,035,768	20,632,281	23,321,150	18,509,938
Growth (%)		9.23%	14.40%	13.03%	

Period Attributable	16,485,858	18,018,653	20,605,736	23,309,994	18,508,015
Comprehensive Income	16,925,171	17,691,505	27,404,745	24,075,741	16,618,113
Comprehensive Attributable	16,899,359	17,673,517	27,378,282	24,063,606	16,617,649

RATIOS	Dec-14	Dec-15	Dec-16	Dec-17	Sep-18
Dividend (Rp)	198.00	55.00	70.00	255.00	85.00
EPS (Rp)	668.66	730.83	835.76	945.45	750.68
BV (Rp)	3,160.44	3,635.16	4,571.69	5,329.61	5,828.64
DAR (X)	0.86	0.84	0.83	0.82	0.81
DER(X)	6.06	5.60	4.97	4.68	4.53
ROA (%)	2.99	3.03	3.05	3.11	2.32
ROE (%)	21.19	20.12	18.30	17.75	12.88
OPM (%)	46.85	48.12	51.24	54.23	46.39
NPM (%)	37.72	38.31	40.92	43.37	36.84
Payout Ratio (%)	29.61	7.53	8.38	26.97	11.32
Yield (%)	1.51	0.41	0.45	1.16	0.35

*US\$ Rate (B), Rp	12,436	13,794	13,436	13,548	14,929
--------------------	--------	--------	--------	--------	--------

