

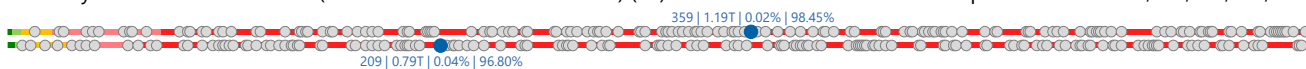
# HKMU HK Metals Utama Tbk.

## COMPANY REPORT : JANUARY 2019

Main Board  
Industry Sector : Trade, Services & Investment (9)  
Industry Sub Sector : Wholesale (Durable & Non-Durable Goods) (91)

## As of 31 January 2019

Individual Index : 160.870  
Listed Shares : 3,221,750,000  
Market Capitalization : 1,192,047,500,000



### COMPANY HISTORY

Established Date : 13-Nov-2010  
Listing Date : 11-Oct-2018 (IPO Price: 230)  
Underwriter IPO :  
PT Trimegah Sekuritas Indonesia Tbk  
PT Sinarmas Sekuritas  
Securities Administration Bureau :  
PT Raya Saham Registrasi

### SHAREHOLDERS (December 2018)

1. Hyamn Sukses Abadi 2,100,000,000 : 65.18%  
2. Public (<5%) 1,121,750,000 : 34.82%

### DIVIDEND ANNOUNCEMENT

Year	Bonus Shares	Cash Dividend	Cum Date	Ex Date	Recording Date	Payment Date	F/I
-							

### BOARD OF COMMISSIONERS

1. Muhamad Kuncoro \*)  
\*) *Independent Commissioners*

### BOARD OF DIRECTORS

1. Muhamad Kuncoro
2. Ngasidjo Achmad
3. Yudhi Sudarmanto

### AUDIT COMMITTEE

1. Fautry Hasfiandy
2. Lukman Hardiansyah
3. Yayang Ari Setiawan

### CORPORATE SECRETARY

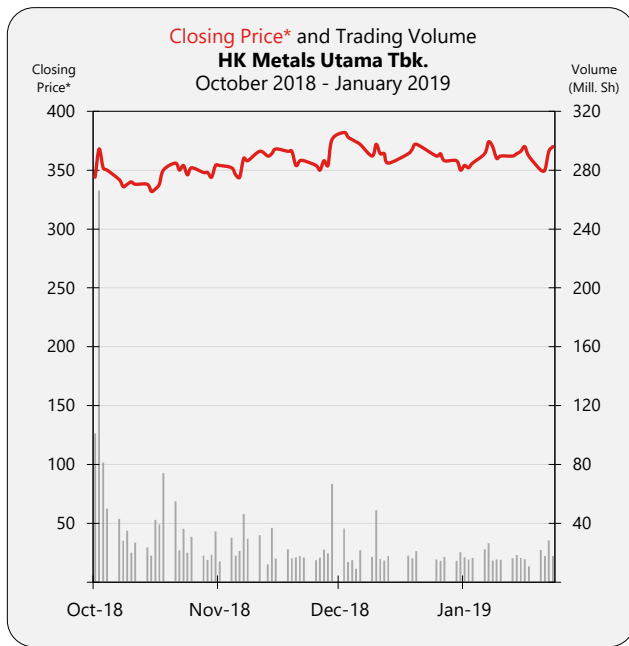
Imelda Feryani

### HEAD OFFICE

Jl. Kp. Turi RT 001 RW 006 Desa Sriamur, Kab. Bekasi  
Jawa Barat 17124  
Phone : (021) 8913-6594  
Fax : (021) 8913-6593  
Homepage : [www.hyamn.com](http://www.hyamn.com)  
Email : [corporate.secretary@hyamn.com](mailto:corporate.secretary@hyamn.com)

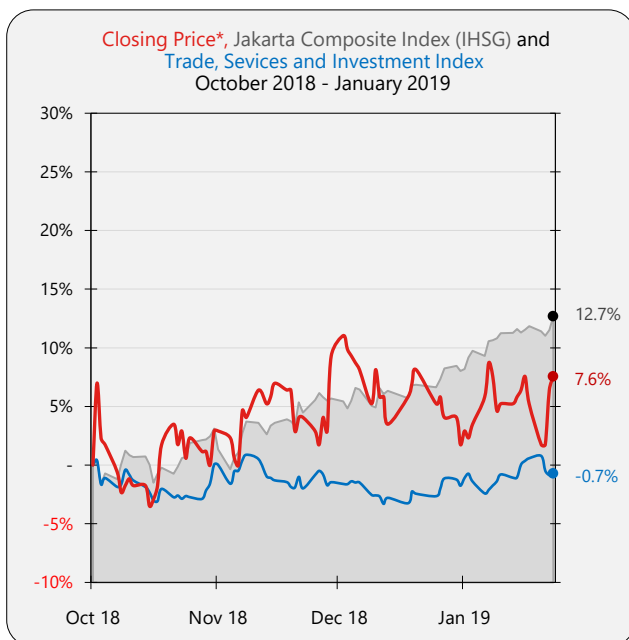
### ISSUED HISTORY

No.	Type of Listing	Shares	Listing Date	Trading Date
1.	First Issue	1,021,740,000	9-Oct-18	9-Oct-18
2.	Company Listing	2,200,010,000	9-Oct-18	9-Oct-18



## TRADING ACTIVITIES

Month	Closing Price			Freq. (X)	Volume (Thou. Sh.)	Value (Million Rp)	Day
	High	Low	Close				
Oct-18	430	322	354	26,531	962,674	328,818	17
Nov-18	370	334	358	11,168	484,089	172,542	21
Dec-18	388	344	372	10,087	405,659	148,466	18
Jan-19	380	350	370	8,085	388,483	140,482	22



SHARES TRADED	2018	Jan-19
Volume (Million Sh.)	1,852	388
Value (Billion Rp)	650	140
Frequency (Thou. X)	48	8
Days	56	22
<b>Price (Rupiah)</b>		
High	430	380
Low	322	350
Close	372	370
Close*	372	370
PER (X)	17.14	17.04
PER Industry (X)	5.25	6.49
PBV (X)	3.34	3.32

\* Adjusted price after corporate action