

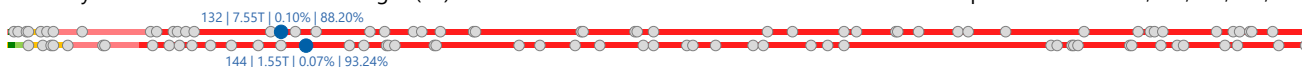
# ROTI Nippon Indosari Corpindo Tbk.

## COMPANY REPORT : JANUARY 2019

Main Board  
Industry Sector : Consumer Goods Industry (5)  
Industry Sub Sector : Food And Beverages (51)

## As of 31 January 2019

Individual Index : 478.431  
Listed Shares : 6,186,488,888  
Market Capitalization : 7,547,516,443,360



### COMPANY HISTORY

Established Date : 08-Mar-1995  
Listing Date : 28-Jun-2010 (IPO Price: 1,275)  
Underwriter IPO :  
PT OSK Nusadana Securities Indonesia  
Securities Administration Bureau :  
PT Raya Saham Registra

### SHAREHOLDERS (December 2018)

1. DB AG SG A/C Bonlight Investments Ltd. WM Client	1,285,984,899	: 20.79%
2. CTLA SA Safekeeping Account Demeter Indo Investment Pte., Ltd.	1,116,711,531	: 18.05%
3. PT Indoritel Makmur Internasional	956,680,200	: 15.46%
4. PT Indoritel Makmur Internasional	637,786,800	: 10.31%
5. Pasco Shikishima Corporation	525,864,777	: 8.50%
6. Public (<5%)	1,663,460,681	: 26.89%

### BOARD OF COMMISSIONERS

1. Benny Setiawan Santoso
  2. Jaka Prasetya
  3. Jusuf Arbianto Tjondrolukito \*)
- \*) *Independent Commissioners*

### BOARD OF DIRECTORS

1. Wendy Sui Cheng Yap
2. Arlina Sofia
3. Chin Yuen Loke
4. Indrayana
5. Kaneyoshi Morita

### AUDIT COMMITTEE

1. Jusuf Arbianto Tjondrolukito
2. A. Bayu Purnama Irawan
3. Rini Trisna

### CORPORATE SECRETARY

Sri Mulyana

### HEAD OFFICE

Kawasan Industri MM2100, Jl. Selayar Blok A9, Mekarwangi  
Bekasi, Jawa Barat 17520  
Phone : (021) 8984-4959; 8984-4953; 8998-3876  
Fax : (021) 8984-4955  
Homepage : [www.sariroti.com](http://www.sariroti.com)  
Email : [sri.mulyana@sariroti.com](mailto:sri.mulyana@sariroti.com)

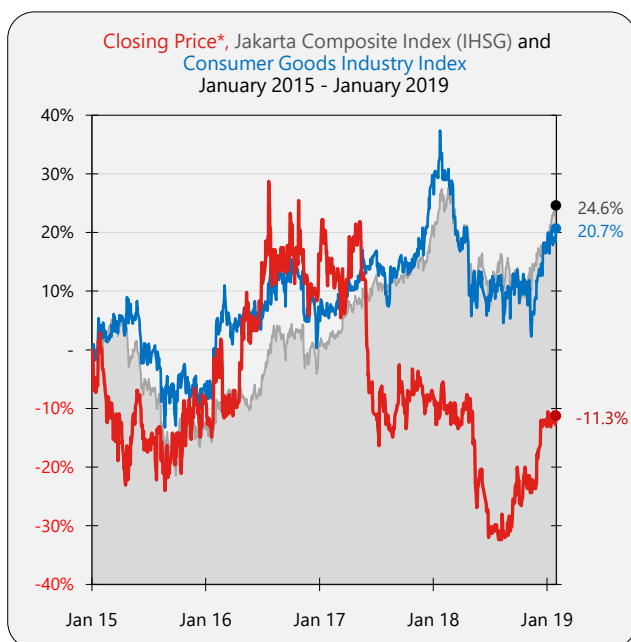
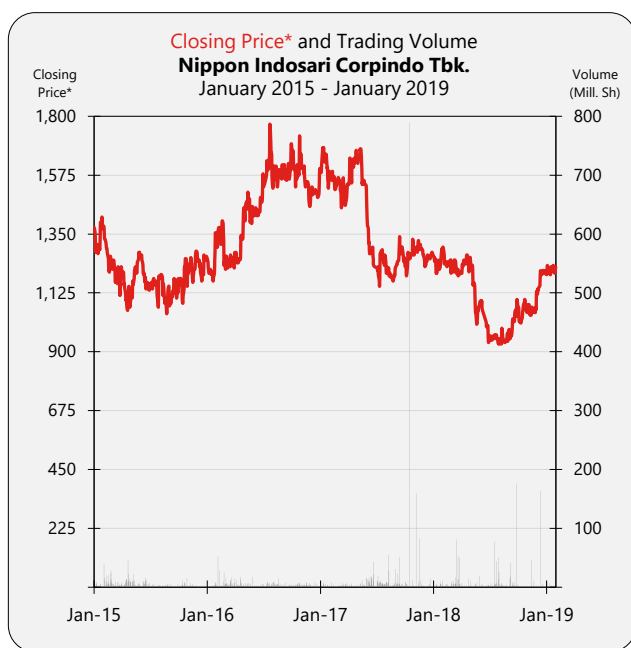
### DIVIDEND ANNOUNCEMENT

Year	Bonus Shares	Cash Dividend	Cum Date	Ex Date	Recording Date	Payment Date	F/I
2010		24.64	19-Apr-11	20-Apr-11	25-Apr-11	9-May-11	F
2011		28.63	21-May-12	22-May-12	24-May-12	7-Jun-12	F
2012		36.83	27-Mar-13	28-Mar-13	2-Apr-13	16-Apr-13	F
2013		3.12	19-May-14	20-May-14	22-May-14	5-Jun-14	F
2016		13.73	23-May-17	24-May-17	29-May-17	16-Jun-17	F
2017		5.82	18-May-18	21-May-18	23-May-18	8-Jun-18	F

### ISSUED HISTORY

No.	Type of Listing	Shares	Listing Date	Trading Date
1.	First Issue	151,854,000	28-Jun-10	28-Jun-10
2.	Company Listing	860,506,000	28-Jun-10	28-Jun-10
3.	Stock Split	4,049,440,000	29-Nov-13	29-Nov-13
4.	Right Issue	287,743	18-Oct-17	18-Oct-17
5.	Right Issue	106,398,855	19-Oct-17	19-Oct-17
6.	Right Issue	752,925,756	20-Oct-17	20-Oct-17
7.	Right Issue	11,228,313	23-Oct-17	23-Oct-17
8.	Right Issue	253,848,221	24-Oct-17	24-Oct-17

# ROTI Nippon Indosari Corpindo Tbk.



SHARES TRADED	2015	2016	2017	2018	Jan-19
Volume (Million Sh.)	1,072	966	2,161	1,441	37
Value (Billion Rp)	1,288	1,385	2,821	1,591	44
Frequency (Thou. X)	111	107	106	57	10
Days	244	246	238	240	22
<b>Price (Rupiah)</b>					
High	1,420	1,770	1,750	1,315	1,250
Low	1,020	1,170	1,145	905	1,190
Close	1,265	1,600	1,275	1,200	1,220
Close*	1,265	1,600	1,275	1,200	1,220
<b>PER (X)</b>					
PER (X)	23.67	19.88	60.77	54.13	55.03
PER Industry (X)	17.71	23.77	18.48	24.94	36.52
PBV (X)	5.39	5.97	5.39	2.60	2.64

\* Adjusted price after corporate action

## TRADING ACTIVITIES

Month	Closing Price			Freq. (X)	Volume (Thou. Sh.)	Value (Million Rp)	Day
	High	Low	Close				
Jan-15	1,420	1,275	1,375	8,638	56,895	75,859	21
Feb-15	1,390	1,200	1,230	12,195	231,087	299,975	19
Mar-15	1,270	1,090	1,220	12,273	89,772	108,048	22
Apr-15	1,220	1,045	1,140	21,848	221,404	247,311	21
May-15	1,300	1,080	1,265	10,838	114,691	136,034	19
Jun-15	1,285	1,120	1,150	7,885	115,309	136,342	21
Jul-15	1,200	1,055	1,180	6,228	40,772	47,027	19
Aug-15	1,195	1,020	1,150	5,330	39,726	44,178	20
Sep-15	1,195	1,070	1,175	4,785	24,400	27,017	21
Oct-15	1,265	1,065	1,195	9,413	80,687	95,463	21
Nov-15	1,285	1,145	1,280	7,517	45,829	56,083	21
Dec-15	1,280	1,160	1,265	3,955	11,769	14,416	19
Jan-16	1,390	1,170	1,350	5,673	40,841	51,207	20
Feb-16	1,420	1,220	1,230	9,971	152,103	201,881	20
Mar-16	1,315	1,210	1,280	17,163	147,101	184,122	21
Apr-16	1,480	1,230	1,450	9,791	102,888	132,905	21
May-16	1,550	1,365	1,420	9,236	68,811	99,572	20
Jun-16	1,625	1,400	1,580	7,502	43,012	63,626	22
Jul-16	1,770	1,500	1,565	7,188	68,759	110,989	16
Aug-16	1,645	1,510	1,615	12,554	107,256	169,172	22
Sep-16	1,715	1,490	1,690	7,178	50,477	80,694	21
Oct-16	1,745	1,530	1,655	7,853	72,360	117,680	21
Nov-16	1,670	1,400	1,470	8,766	76,866	119,199	22
Dec-16	1,610	1,460	1,600	3,875	35,318	53,531	20
Jan-17	1,750	1,505	1,580	5,047	42,600	69,957	21
Feb-17	1,590	1,515	1,565	3,966	25,847	40,210	19
Mar-17	1,600	1,440	1,540	13,031	67,945	102,430	22
Apr-17	1,670	1,540	1,640	6,087	32,099	51,859	17
May-17	1,740	1,415	1,450	9,893	89,052	140,064	20
Jun-17	1,465	1,225	1,230	19,443	213,657	278,935	15
Jul-17	1,300	1,145	1,250	13,639	160,510	199,245	21
Aug-17	1,250	1,165	1,220	8,655	198,102	239,538	22
Sep-17	1,355	1,215	1,260	9,666	142,555	181,021	19
Oct-17	1,370	1,190	1,270	9,200	858,087	1,092,494	22
Nov-17	1,340	1,250	1,270	3,666	290,713	371,230	22
Dec-17	1,285	1,225	1,275	3,921	39,562	54,194	18
Jan-18	1,310	1,170	1,295	6,739	69,167	85,587	22
Feb-18	1,315	1,200	1,230	3,292	38,767	48,554	19
Mar-18	1,250	1,180	1,205	2,689	298,505	379,918	21
Apr-18	1,275	1,200	1,260	2,363	54,389	71,658	21
May-18	1,255	980	1,090	6,465	59,782	74,207	20
Jun-18	1,100	915	940	3,258	35,609	36,189	13
Jul-18	995	905	950	7,305	243,849	230,976	22
Aug-18	1,025	905	975	6,125	80,308	75,066	21
Sep-18	1,100	915	1,100	6,016	295,040	282,336	19
Oct-18	1,110	980	1,050	3,096	14,516	15,326	23
Nov-18	1,130	980	1,130	5,686	70,668	74,068	21
Dec-18	1,225	1,090	1,200	4,370	180,832	216,622	18
Jan-19	1,250	1,190	1,220	10,343	36,608	44,300	22

# ROTI Nippon Indosari Corpindo Tbk.

## Financial Data and Ratios

Public Accountant : Purwanto, Suherman & Surja

Book End : December

BALANCE SHEET	Dec-14	Dec-15	Dec-16	Dec-17	Sep-18
<i>(in Million Rp, except Par Value)</i>					
Cash & Cash Equivalents	162,584	515,237	610,989	1,895,070	1,239,446
Receivables	213,407	250,544	283,954	337,951	390,981
Inventories	40,796	43,169	50,747	50,264	54,549
Current Assets	420,316	812,991	949,414	2,319,937	1,911,790
Fixed Assets	1,679,982	1,821,378	1,842,722	1,993,663	2,128,805
Other Assets	15,493	42,362	37,247	-	-
Total Assets	2,142,894	2,706,324	2,919,641	4,559,574	4,298,883
<b>Growth (%)</b>		<b>26.29%</b>	<b>7.88%</b>	<b>56.17%</b>	<b>-5.72%</b>

Current Liabilities	307,609	395,920	320,502	1,027,177	704,350
Long Term Liabilities	875,163	1,121,869	1,156,387	712,291	740,479
Total Liabilities	1,182,772	1,517,789	1,476,889	1,739,468	1,444,829
<b>Growth (%)</b>		<b>28.32%</b>	<b>-2.69%</b>	<b>17.78%</b>	<b>-16.94%</b>

Authorized Capital	344,000	344,000	344,000	344,000	344,000
Paid up Capital	101,236	101,236	101,236	101,236	123,730
Paid up Capital (Shares)	5,062	5,062	5,062	5,062	6,186
Par Value	20	20	20	20	20
Retained Earnings	685,885	915,065	1,127,742	1,193,185	1,260,043
Total Equity	960,122	1,188,535	1,442,752	2,820,106	2,854,054
<b>Growth (%)</b>		<b>23.79%</b>	<b>21.39%</b>	<b>95.47%</b>	<b>1.20%</b>

INCOME STATEMENTS	Dec-14	Dec-15	Dec-16	Dec-17	Sep-18
Total Revenues	1,880,263	2,174,502	2,521,921	2,491,100	1,985,178
<b>Growth (%)</b>		<b>15.65%</b>	<b>15.98%</b>	<b>-1.22%</b>	

Cost of Revenues	978,850	1,019,511	1,220,833	1,183,169	933,770
Gross Profit	901,412	1,154,990	1,301,088	1,307,931	1,051,408
Expenses (Income)	602,784	701,332	858,043	1,050,766	933,705
Operating Profit	298,629	453,658	443,045	257,165	117,703
<b>Growth (%)</b>		<b>51.91%</b>	<b>-2.34%</b>	<b>-41.96%</b>	

Other Income (Expenses)	-45,866	-75,407	-73,628	-71,017	-10,108
Income before Tax	252,763	378,252	369,417	186,147	107,595
Tax	64,185	107,713	89,639	50,783	37,395
Profit for the period	188,578	270,539	279,777	135,364	70,200
<b>Growth (%)</b>		<b>43.46%</b>	<b>3.41%</b>	<b>-51.62%</b>	

Period Attributable	188,578	270,539	279,961	145,981	102,864
Comprehensive Income	188,578	263,711	263,392	124,468	71,676
Comprehensive Attributable	188,578	263,711	264,462	135,058	103,743

RATIOS	Dec-14	Dec-15	Dec-16	Dec-17	Sep-18
Current Ratio (%)	136.64	205.34	296.23	225.86	271.43
Dividend (Rp)	-	-	13.73	5.82	-
EPS (Rp)	37.26	53.45	55.31	28.84	16.63
BV (Rp)	189.68	234.80	285.03	557.13	461.34
DAR (X)	0.55	0.56	0.51	0.38	0.34
DER(X)	1.23	1.28	1.02	0.62	0.51
ROA (%)	8.80	10.00	9.58	2.97	1.63
ROE (%)	19.64	22.76	19.39	4.80	2.46
GPM (%)	47.94	53.12	51.59	52.50	52.96
OPM (%)	15.88	20.86	17.57	10.32	5.93
NPM (%)	10.03	12.44	11.09	5.43	3.54
Payout Ratio (%)	-	-	24.82	20.18	-
Yield (%)	-	-	0.86	0.46	-

*US\$ Rate (BI), Rp	12,436	13,794	13,436	13,548	14,929
---------------------	--------	--------	--------	--------	--------

